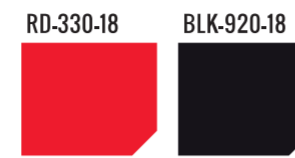




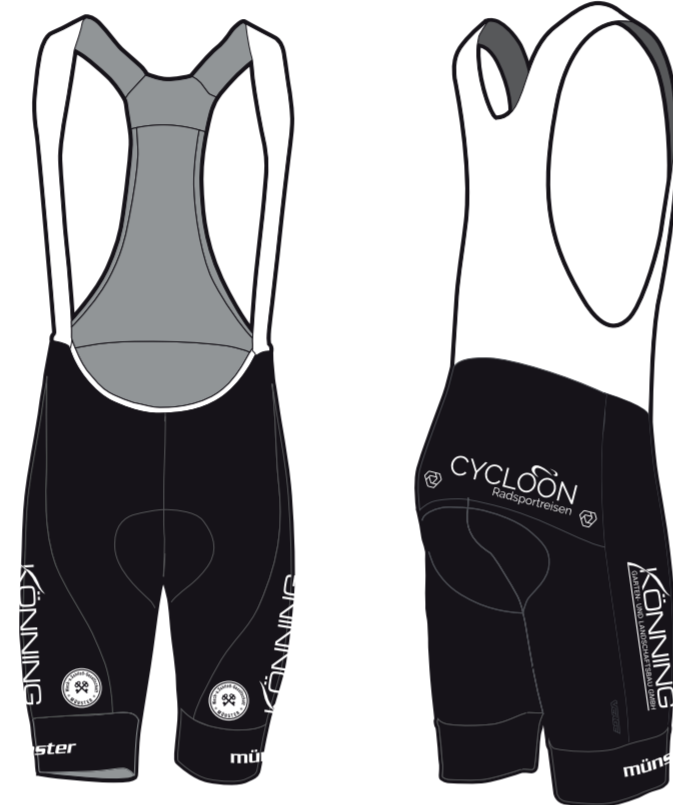
# ART34958



- Logos komplett weiß  
- Reißverschluss schwarz



Schriftzug MÜNSTER auf jeden Hosenbein jeweils 1 x mittig unterhalb von KÖNNING



Handschuhe A.



Armlinge



Knieinge



Langarm-Artikel A.



Weste



**When you adapt this design to the TOR-JERSEY, please place all accoring to 3-d-version**

COLLECTION: Cycling  
PRODUCT: Men's Core Fitted Jersey  
Short Sleeve  
EU10051032



COLLECTION: R&B  
PRODUCT: Ultimate Men's Bib Shorts  
EU10051635



**Can you move the round logo in front to the best position towards knee with the sizes, if possible? It can be placed better everywhere than in the smallest size :-)**

# ART34959



on sleeveends no red stripe, no münster, but BLACK, RED, YELLOW ends

YL-160-18

